

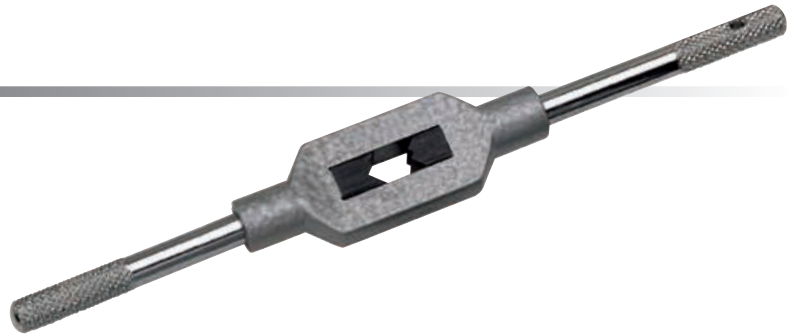


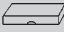
## Verstellbare Windeisen

DIN 1814, Körper aus Zinkdruckguss,  
gehärtete Backen

### Tourne-à-gauche

DIN 1814, en zamac



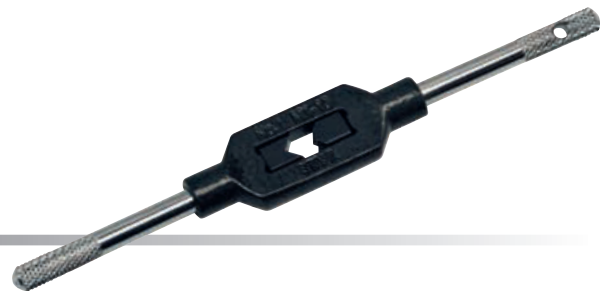
No.	für Gewindebohrer			Vierkant mm	Länge mm	Gewicht kg		Art.-No.
0	M 1-8	1/16-1/4		2.0-5.0	130	0,050	5	13000
1	M 1-10	1/16-3/8	G 1/8	2.0-6.3	176	0,095	5	13010
1.1/2	M 1-12	1/16-1/2	G 1/8	2.1-8.0	176	0,120	5	13015
2	M 4-12	5/32-1/2	G 1/8	3.0-9.0	280	0,285	5	13020
3	M 5-20	7/32-3/4	G 1/8-1/2	4.9-12	380	0,660	1	13030
4	M 11-27	7/16-1"	G 1/4-3/4	5.5-16	505	1,500	1	13040
5 L	M 13-32	1/2 -1.1/4	G 1/4-1"	7-20	700	1,800	1	13050


## Verstellbare Windeisen

DIN 1814, [STAHL-Ausführung](#)

### Tourne-à-gauche

DIN 1814, [en acier](#)



No.	für Gewindebohrer			Vierkant mm	Länge mm	Gewicht kg		Art.-No.
0	M 1-8	1/16-1/4		2.0-5.0	130	0,050	5	14000
1	M 1-10	1/16-3/8		2.0-6.3	176	0,100	5	14010
1.1/2	M 1-12	1/16-1/2	G 1/8	2.1-8.0	176	0,120	5	14015
2	M 4-12	5/32-1/2	G 1/8	3.0-9.0	280	0,285	5	14020
3	M 5-20	7/32-3/4	G 1/8-1/2	4.9-12	380	0,660	1	14030
4	M 11-27	7/16-1"	G 1/4-3/4	5.5-16	500	1,500	1	14040
5	M 13-32	1/2-1.1/4	G 1/4-1"	7-20	700	1,800	1	14050
6	M 18-42	3/4-1.1/2	G 1/2-1.1/4	11-24	1000	2,600	1	14060
7	M 27-52	1.1/8-2"	G 3/4-1.3/4	16-32	1250	4,500	1	14070
8	M 27-64	1.1/8"-3"	G 3/4-3"	16-40	1250	4,500	1	14080