

**Precision Regulator
G¹/₄**

- Large diaphragm to valve area ratio provides precise pressure regulation
- Suitable for use with air controlled instruments or dead-end service
- Recommended as pilot regulator for R18 and 11-808 pilot operated regulators and 40AC pilot operated relief valve
- Constant bleed design ensures quick accurate response to pressure changes


Technical Data

Medium:

Compressed air only

Maximum Inlet Pressure:

25 bar

Operating Temperature:

-20°C* to +80°C

*Consult our Technical Service for use below +2°C

Recommended Regulated Pressures:

0,06 - 2 bar

0,06 - 4 bar

0,16 - 7 bar

7 - 20 bar (20AL-X2G)

Gauge Ports:

G¹/₈

Maximum Flow with 7 bar inlet pressure, 1,6 bar outlet pressure and pressure drop of 0,1 bar:

2 dm³/s

Note: It is important to filter the air supply to these regulators to 25 µm

Port Size

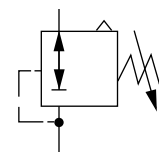
G¹/₄ to ISO 1179

Accepts ISO 228 (BS 2779) parallel or ISO 7 (BS 21) taper connectors

Alternative Models

Other port thread forms

Panel Mounting Bonnet


Materials

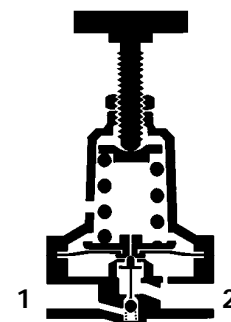
Zinc alloy body and bonnet. Acetal resin adjusting knob.

Synthetic rubber elastomeric materials.

Ordering Information

To order a standard Precision Regulator, quote model number from table overleaf.

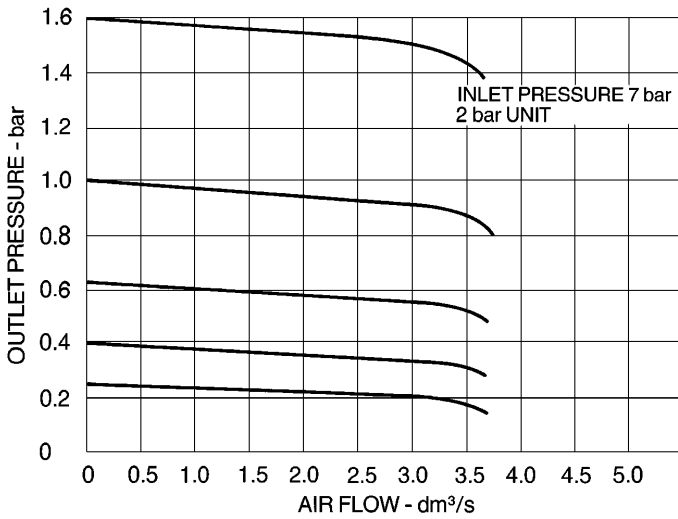
For non-standard models please consult our Technical Service.



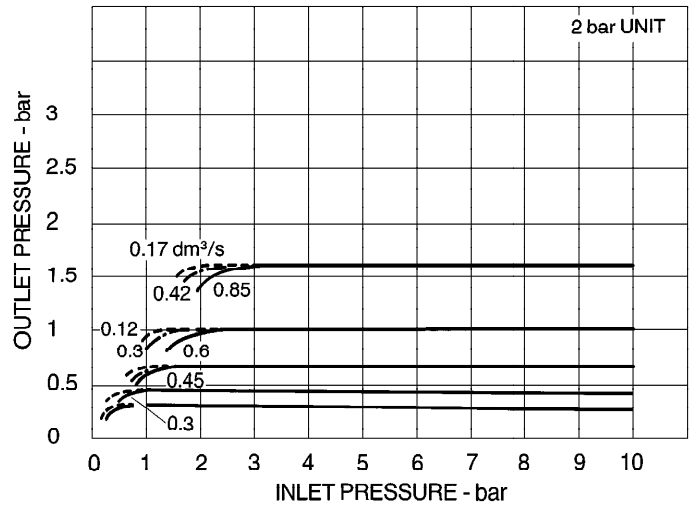


Typical Performance Characteristics

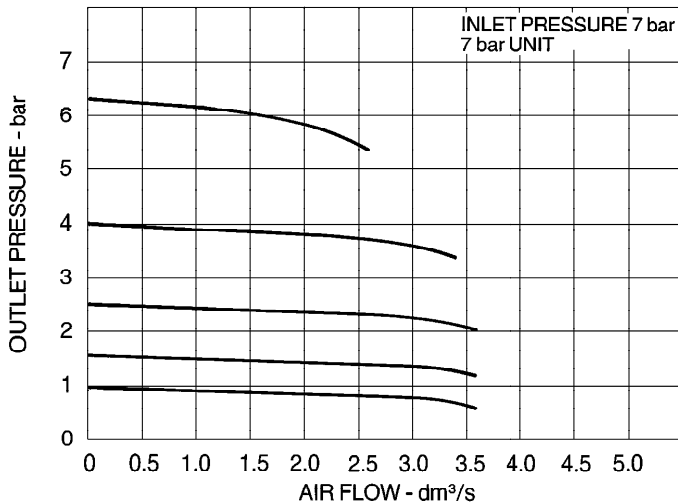
FLOW CHARACTERISTICS



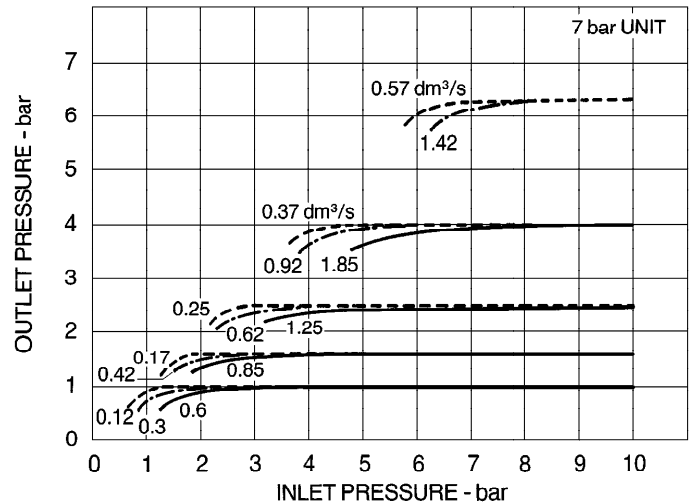
REGULATION CHARACTERISTICS



FLOW CHARACTERISTICS



REGULATION CHARACTERISTICS



Standard Precision Regulators

Spring Range (bar)	Port Size	Relieving	Weight kg
0,06-2	G ¹ / ₄	11,400-2G	0,90
0,06-4	G ¹ / ₄	11,400-2G (4 bar)	0,94
0,16-7	G ¹ / ₄	11,400-2G (7 bar)	1,00
7-20	G ¹ / ₄	20AL-X2G	1,05

Non-standard Models

For other options, please consult our Technical Service.

Accessories

Wall Mounting Bracket Kit, see page 8.6.101.03.

Panel Mounting Kits (includes panel mounting bonnet and mounting nut), reference 18-003-999 for 11,400 models or reference 18-003-026 for 20AL-X models.

Slotted Adjusting Screw, reference 1094-99.

Tamper Resistant Cap (includes panel mounting bonnet), reference 18-004-997.

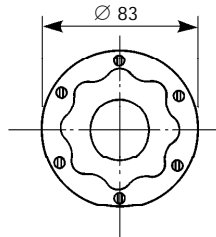
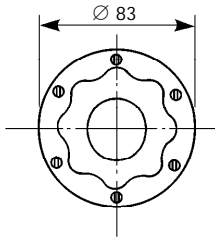
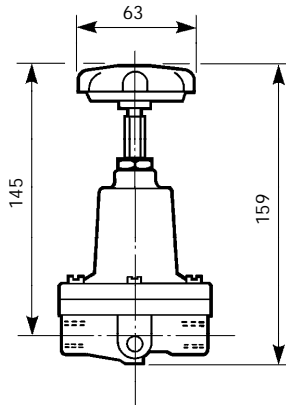
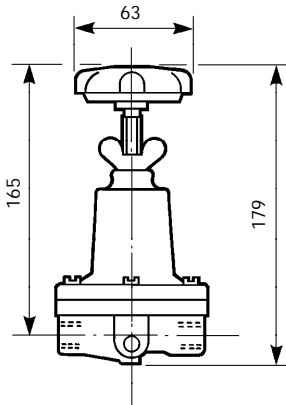
Pressure Gauges, see page 8.11.031.01.



Precision Regulators

11,400 Series

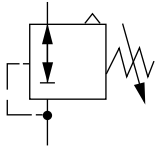
20AL-X Series



11,400 Series

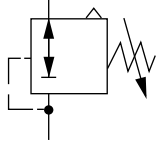
2 bar spring
11,400-2G

G¹/₄



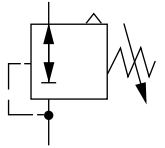
4 bar spring
11,400-2G (4 bar)

G¹/₄



7 bar spring
11,400-2G (7 bar)

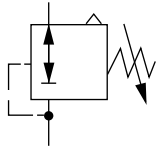
G¹/₄



20AL-X Series

20 bar spring
20AL-X2G

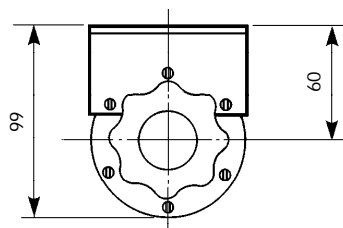
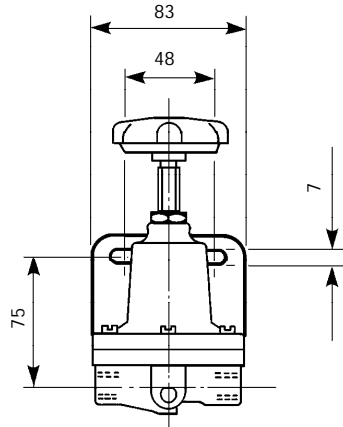
G¹/₄



Bracket Mounting

Bracket Kit reference:

18-001-005



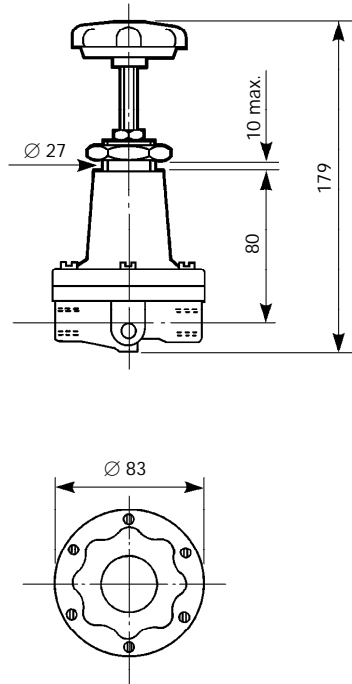


Panel Mounting

Panel Mounting Kit reference:

11,400 Series 18-003-999

20AL-X Series 18-003-026



Spares Kits

Type	Repair Kit
All models	11,400-100

Warning

These products are intended for use in industrial compressed air systems only. Do not use these products where pressures and temperatures can exceed those listed under 'Technical Data'.

Before using these products with fluids other than those specified, for non-industrial applications, life-support systems, or other applications not within published specifications, consult NORGREN.

Through misuse, age, or malfunction, components used in fluid power systems can fail in various modes. The system designer is warned to consider the failure modes of all component parts used in fluid power systems and to provide adequate safeguards to prevent personal injury or damage to equipment in the event of such failure.

System designers must provide a warning to end users in the system instructional manual if protection against a failure mode cannot be adequately provided.

System designers and end users are cautioned to review specific warnings found in instruction sheets packed and shipped with these products.