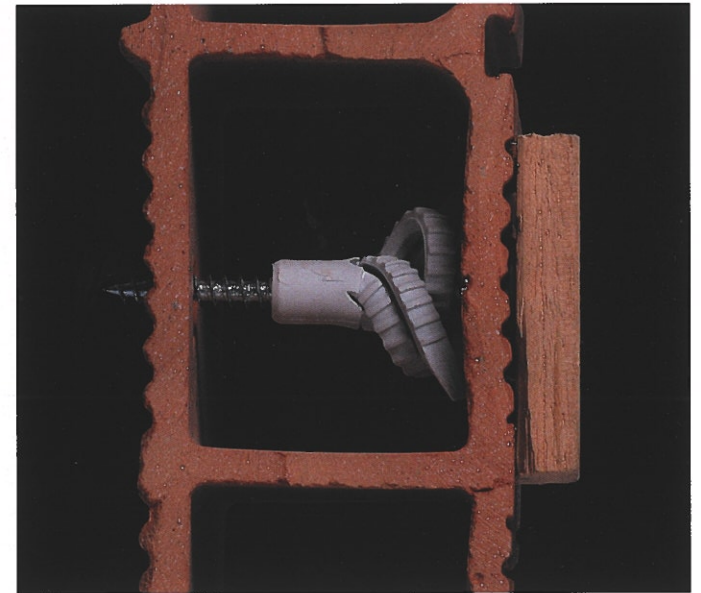







Universal Plug

Universele plug
 Universaldübel
 Cheville universelle
 Universal Pløk

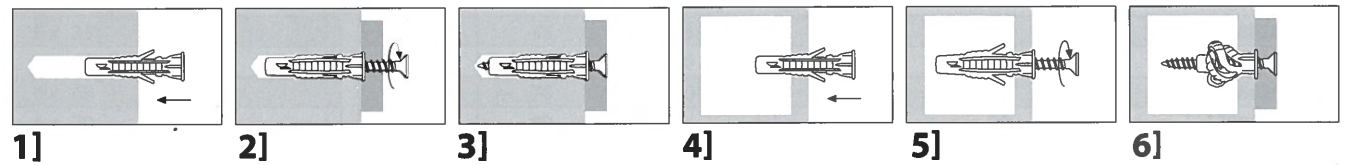
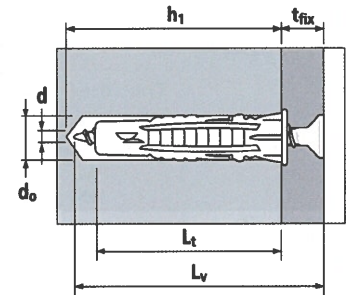
FIXINGS FOR CONCRETE AND BRICK




				
solid brick	hollow brick	concrete	perforated sand-lime stone	natural stone

Type	Load capacities		
	Concrete C 20/25	Solid brick	Hollow brick
DIAMETER	Recommended tension load N_{rec} (kN)	Recommended tension load N_{rec} (kN)	Recommended tension load N_{rec} (kN)
6 x 32	0,22	0,22	0,20
8 x 50	0,45	0,45	0,25
10 x 60	0,70	0,70	0,40

Conditions on load capacity: See page I, ref# 5



TYPE	d_o [mm]	L [mm]	ART. NR.		EAN 13
Universal plug 6	6	35	E1065	200	
Universal plug 8	8	50	E1066	100	
Universal plug 10	10	60	E1067	50	

